

GORDON V. THOMPSON MUSIC

GVTVEI1042

SATB

Jesus Erbarm Dich

Claude Vivier

This old perusal score will be reset to current quality standards when an order is placed.

Leslie Music Supply Inc.

Printed and distributed by: Mayfair Music Publications Inc.

Keswick ON Canada L4P 3E9

www.musicfromcanada.com

www.mayfairmusic.com

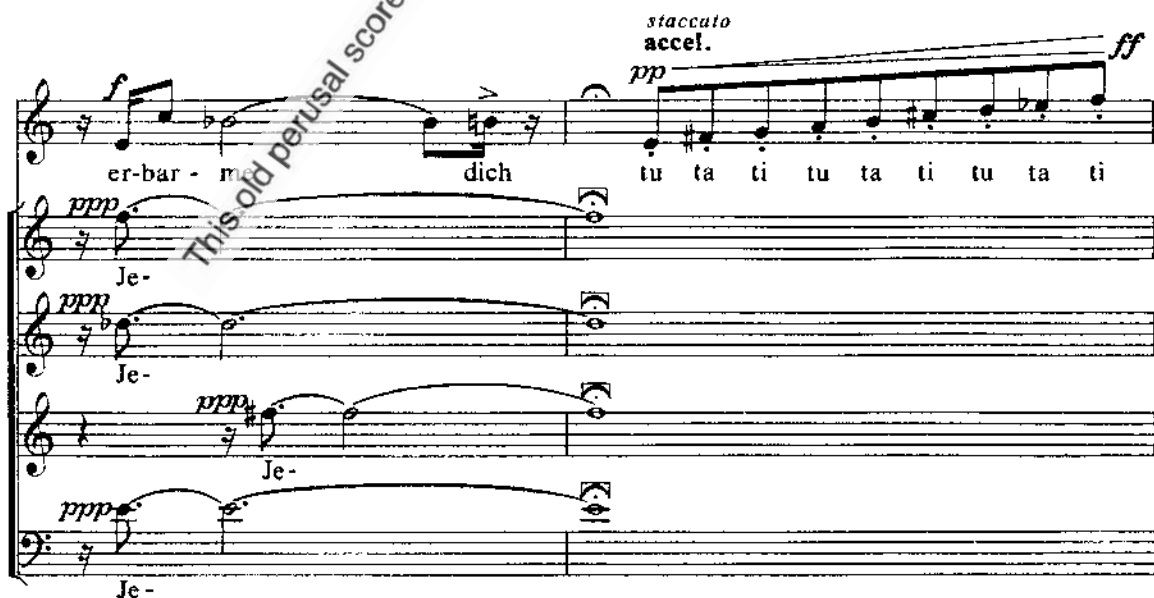
2008 - Reprinted by Permission

Alfred Publishing Company

JESUS ERBARM DICH

Claude Vivier

Soprano
Solo



© Copyright 1977 by Chanteclair Music, Toronto, Canada
A Division of Gordon V. Thompson Limited

Printed in Canada

Warning: it is illegal to copy this work without permission

All Rights Reserved

$\text{♩} = 80$ rit.

er-bar-me dich er-bar-me dich er-bar-me dich Je - sus er-bar -

Je - sus Je - sus Je -

Je - Je -

- sus Je -

ppp $\text{♩} = 60$ accel.

- me dich er-bar-me dich

ppp

ppp

ppp

mf

Je - sus Je - sus

$\text{♩} = 100$ 4 times $\text{♩} = 160$ *p*

Sop. Solo

Je - sus Je -

Je - sus Je -

Je - sus Je -

Je - sus Je - sus Je -

*the crescendo moves gradually through the four repeats

Musical score for the hymn "Je sus er - bar - me dich". The score is written for a vocal line and a piano accompaniment. The tempo is marked "♩ = 80 (Solo) a tempo". The piano part features a tremolo effect on the right hand, indicated by the instruction "move hand quickly back and forth against open mouth". The dynamics range from piano (*p*) to fortissimo (*fff*).

Musical notation includes a vocal line with lyrics and a piano accompaniment with a tremolo effect. The lyrics are "Je sus er - bar - me dich".

* Tenor grace-note F with Alto F; Tenor F# with Bass F#